

959 Mearns Road  
 Warminster, PA 18974  
[www.TeikokuPumps.com](http://www.TeikokuPumps.com)  
 ☎ 215-343-6000  
 ☎ 267-486-1037

5880 Bingle Road  
 Houston, TX 77092  
[www.TeikokuPumps.com](http://www.TeikokuPumps.com)  
 ☎ 713-983-9901  
 ☎ 713-983-9919

St. Rt. 2 North  
 Belmont, WV 26134  
[www.TeikokuPumps.com](http://www.TeikokuPumps.com)  
 ☎ 304-684-2459  
 ☎ 304-684-7593

## Proposal

Date 7-28-2014	Quote No. 2014-18338	Inquiry No.	Project Name	Terms (in US Currency) Net 30	
To: Rick Vondra Patriot Renewable Fuels, LLC			Representative for Teikoku USA, Inc.		
Address: P.O. Box 560 Annawan, Illinois 61234			Travis Munn Superior Industrial Equipment  1609 Afton Road Sycamore, Illinois 60178		
Country: United States			United States		
Phone: 309-935-5700			815-899-8900		
Fax: rvondra@patriotethanol.com			815-899-8898		
Email:			tmunn@superiorpumps.com		
We promise to furnish the equipment listed below at the price shown subject to Teikoku USA's Conditions of Sale. FOB Factory					
Item No.	Equip No.	Quantity	Pump Model	Unit Price	Total Price
6	P-801	1	F41-215U4L-0204SS1-AV	\$7,607.00	\$7,607.00
Application Data:		Materials of Construction:		Motor Data:	
Fluid:	Biodiesel	Pump Case:	304SS	Insulation:	Class 300
TDH (feet):	29.3	Impeller:	304SS	Frame:	215
Capacity (GPM):	13.2	Gaskets/O-rings:	PTFE	Stator Fill:	None
Specific Gravity:	0.95	Rotor Liner:	316L SS	Voltage:	460
Viscosity (cps):	1.0	Stator Liner:	Hast C	Phase:	3
Op. Temp. (F):	302.0	Brg. Hsg./Adapter:	304 SS	Hertz:	60
Vapor Press. (psia):		Shaft:	304SS	RPM:	3450
Sp. Ht. (BTU/lbmF):		Bearings:	Carbon Graphite 10F	Design Power (HP)	0.69
Suct. Press. (psig):		Shaft Sleeves/TC's:	316 SS + Stellite	Runout Power (HP):	0.9
Dsch. Press. (psig):		Suct. Conn:	1-1/2 inch / 150# RF	Motor Rating (HP):	1
Diff. Press. (psi):	12.0	Dsch. Conn.:	1 inch / 150# RF	F.L. Amp:	2.4
NPSHAvail. (feet):	***	Case Drain:	1/2" NPT	F.L. KW:	
NPSHReq. (feet):	4.4	Adapter:	No	Start KVA:	
Eff. @ Diam. (%):	24.8	Circulation Path:	Standard	Motor Rating:	TELC
Imp. Diam. (in):	4.1	Net Wgt. (lbs):	165.0	Area Class:	Class 1, Group C & D, Div 2
Design Pressure	150 PSI				
Options:			Thermal TCO (F):		
Hydraulic Test: Non-Witnessed			None		
NPSH Test: Non-Witnessed			Perf. Curve No.:		
Hydrostatic Test: Non-Witnessed			Attached		
Shipment can be improved by 3 weeks by adding \$528.00 per pump for air freight.			Bulletin Number:		
Standard TRG bearing wear monitor included.			Teikoku Standard		
			Outline Dwg.:		
			Attached		
			Shipment:		
			16		
			(wks) after drwg. approval or mfg. release.		
			Comments:		

*Thank you for your inquiry.*  
 Please feel free to visit our website at: [www.TeikokuPumps.com](http://www.TeikokuPumps.com)  
 Abhilash Abraham/AE x 2847



# ESTIMATED PERFORMANCE CURVE

Date : 2014/7/25  
No :  
Dwg. No. :

SP

Item No. P-101 Item Name Feed Pump  
Model F41-215U4L-0204SS1-AV

Frequency	60	Hz	Total Head	29.3	ft			
Voltage	460	V	Capacity	13.2	gpm	3.0	m <sup>3</sup> /h	
Phase	3		Min.Flow	5.3	gpm	1.2	m <sup>3</sup> /h	
Pole	2		Liquid	Biodiesel				
Output	1.0	HP	Temp.	302	degF			
Current	2.4	A	S.G.	0.95		Vis.	1	mPas
Ex-proof	d2G2		NPSHavail.	***	ft	NPSHreq.	4.4	ft

215U-0204SS1  
F-TYPE

## Judgement

good

d2G2

Date 2014/7/25

CQ 1.00

CH 1.00

CE 1.00

H 29.3

Q 13.2

SG 0.95

VIS 1

P 1.01

I 2.4

HL 54.1

IL 2.15

PsL 0.69

EpL 24.8

NL 3529.0

QH 46.5

IH 2.3

Dia/STG Dia=104

P/PsL 1.46

1 HW/HX

2 (Dmn/Dmx)<sup>2</sup>

3 Dia ave.

4 MAX Dia 130

5 MIN Dia 104

6 M8/M10

HW 54.0

IW 2.17

PsW 0.72

EpW 24.9

NW 3525.3

NPSHstd 4.41

1>2

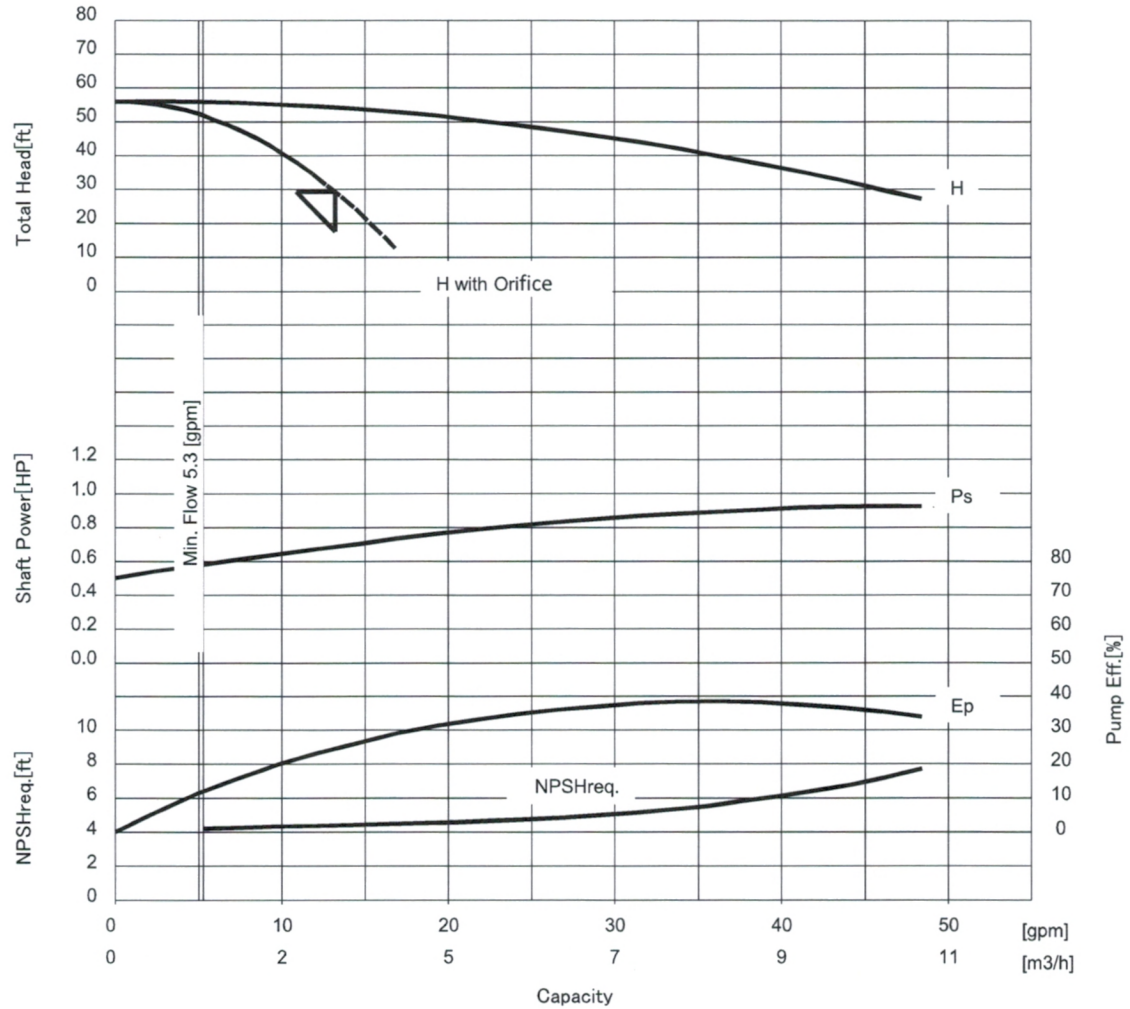
3\*0.97>5

1>6\*0.95

4\*0.98>3

INS.CLASS Class 300

MAX.TEMP 338



## Remarks :

REV.	Date	Description

APPROVED BY	CHECKED BY	DRAWN BY

C

TEIKOKU ELECTRIC MFG. CO., LTD.

Version NTP11.15EN2.1



4W-7576

4

3

2

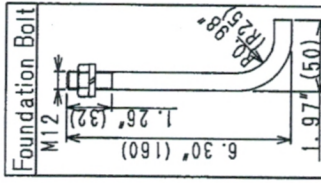
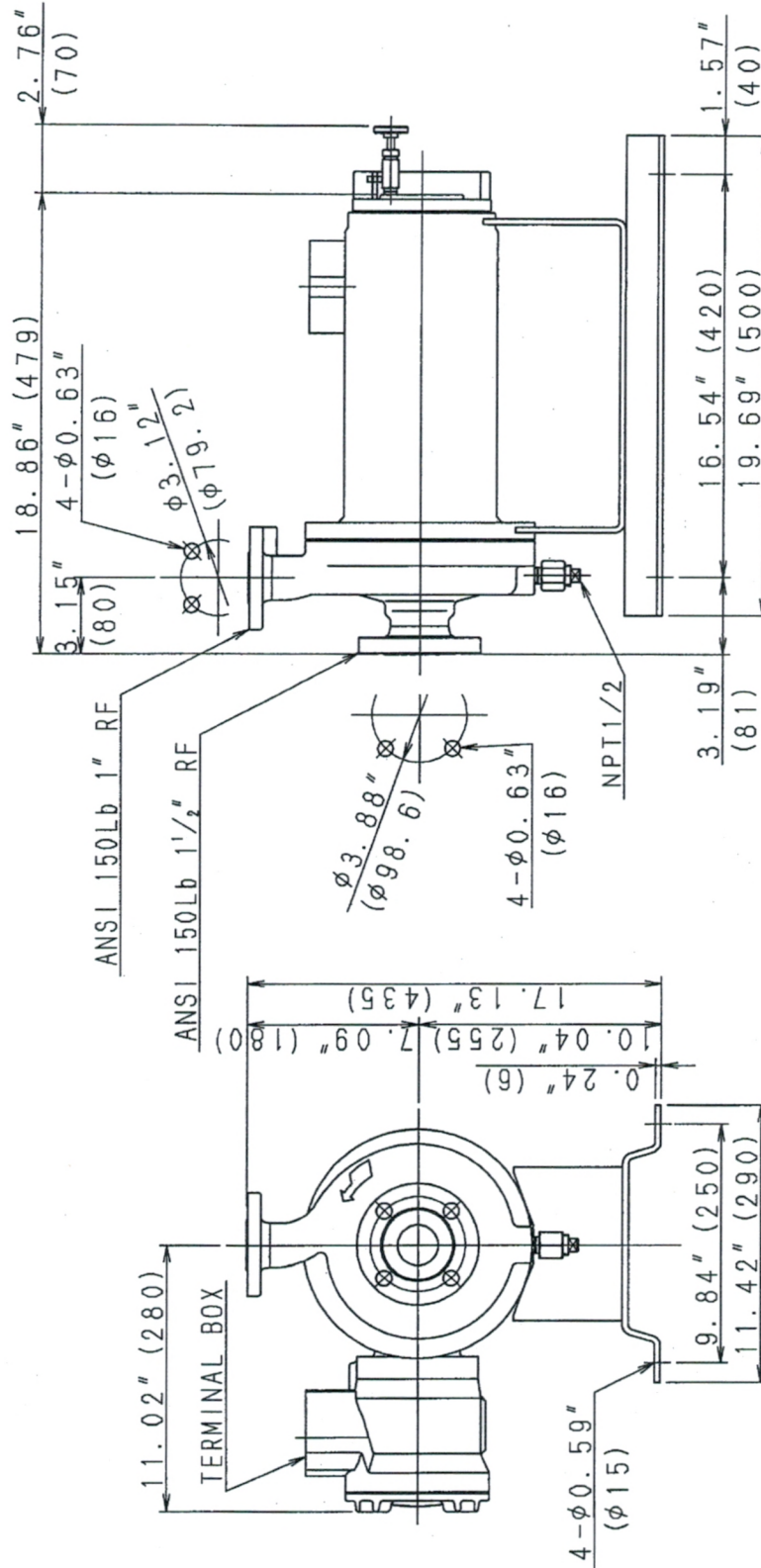
1

A

B

C

D



CH1364

Revised

Jul. 17, '02

Y. Takeuchi

Added

Jun. 10, '06

M. Sakai

D

Added

Jun. 10, '06

M. Sakai

C

Revised

Jul. 17, '02

Y. Takeuchi

D

Added

Jun. 10, '06

M. Sakai

C

Revised

Jul. 17, '02

Y. Takeuchi

D

Added

Jun. 10, '06

M. Sakai

C

Revised

Jul. 17, '02

Y. Takeuchi

D

Added

Jun. 10, '06

M. Sakai

C

Revised

Jul. 17, '02

Y. Takeuchi

D

Added

Jun. 10, '06

M. Sakai

C

Revised

Jul. 17, '02

Y. Takeuchi

D

Added

Jun. 10, '06

M. Sakai

C

Revised

Jul. 17, '02

Y. Takeuchi

D

Added

Jun. 10, '06

M. Sakai

C

Revised

Jul. 17, '02

Y. Takeuchi

D

Added

Jun. 10, '06

M. Sakai

C

Revised

Jul. 17, '02

Y. Takeuchi

D

Added

Jun. 10, '06

M. Sakai

C

Revised

Jul. 17, '02

Y. Takeuchi

D

Added

Jun. 10, '06

M. Sakai

C

Revised

Jul. 17, '02

Y. Takeuchi

D

Added

Jun. 10, '06

M. Sakai

C

Revised

Jul. 17, '02

Y. Takeuchi

D

Added

Jun. 10, '06

M. Sakai

C

Revised

Jul. 17, '02

Y. Takeuchi

D

Added

Jun. 10, '06

M. Sakai

C

Revised

Jul. 17, '02

Y. Takeuchi

D

Added

Jun. 10, '06

M. Sakai

C

Revised

Jul. 17, '02

Y. Takeuchi

D

Added

Jun. 10, '06

M. Sakai

C

Revised

Jul. 17, '02

Y. Takeuchi

D

Added

Jun. 10, '06

M. Sakai

C

Revised

Jul. 17, '02

Y. Takeuchi

D

Added

Jun. 10, '06

M. Sakai

C

Revised

Jul. 17, '02

Y. Takeuchi

D

Added

Jun. 10, '06

M. Sakai

C

Revised

Jul. 17, '02

Y. Takeuchi

D

Added

Jun. 10, '06

M. Sakai

C

Revised

Jul. 17, '02

Y. Takeuchi

D

Added

Jun. 10, '06

M. Sakai

C

Revised

Jul. 17, '02

Y. Takeuchi

D

Added

Jun. 10, '06

M. Sakai

C

Revised

Jul. 17, '02

Y. Takeuchi

D

Added

Jun. 10, '06

M. Sakai

C

Revised

Jul. 17, '02

Y. Takeuchi

D

Added

Jun. 10, '06

M. Sakai

C

Revised

Jul. 17, '02

Y. Takeuchi

D

Added

Jun. 10, '06

M. Sakai

C

Revised

Jul. 17, '02

Y. Takeuchi

D

Added

Jun. 10, '06

M. Sakai

C

Revised

Jul. 17, '02

Y. Takeuchi

D

Added

Jun. 10, '06

M. Sakai

C

Revised

Jul. 17, '02

Y. Takeuchi

D

Added

Jun. 10, '06

M. Sakai

C

Revised

Jul. 17, '02

Y. Takeuchi

D

Added

Jun. 10, '06

M. Sakai

C

Revised

Jul. 17, '02

Y. Takeuchi

D

Added

Jun. 10, '06

M. Sakai

C

Revised

Jul. 17, '02

Y. Takeuchi

D

Added

Jun. 10, '06

M. Sakai

C

Revised

Jul. 17, '02

Y. Takeuchi

D

Added

Jun. 10, '06

M. Sakai

C

Revised

Jul. 17, '02

Y. Takeuchi

D

Added

Jun. 10, '06

M. Sakai

C

Revised

Jul. 17, '02

Y. Takeuchi

D

Added

Jun. 10, '06

M. Sakai

C

Revised

Jul. 17, '02

Y. Takeuchi

D

Added

Jun. 10, '06

M. Sakai

C